

drenaLINE splice
TEUFELBERGER spLIFE program

Splicing guides





TEUFELBERGER DRENALINE SPLICE INSTRUCTION

Please follow these instructions carefully!

Teufelberger assumes no liability for any direct, indirect, or incidental consequences/damage occurring during or after the use of the product and resulting from lack to follow these instructions and from any improper use.

Although we make this manual publicly available, this splice may only be made by a certified manufacturer.

Tools





How to splice TEUFELBERGER drenaLINE

1. Cut off sealed rope end



Markings

Each from the rope end.

- ✓ 70 cm mark A
- ✓ 78 cm mark B

- ✓ 108 cm mark C
- ✓ 120 cm mark D

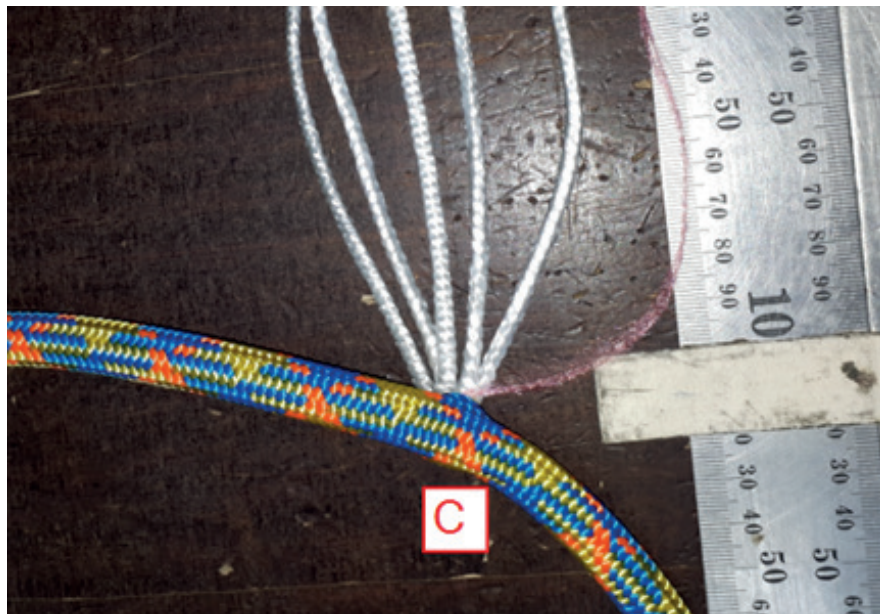




3. approximately 40 cm behind D tie a little sling into the rope.



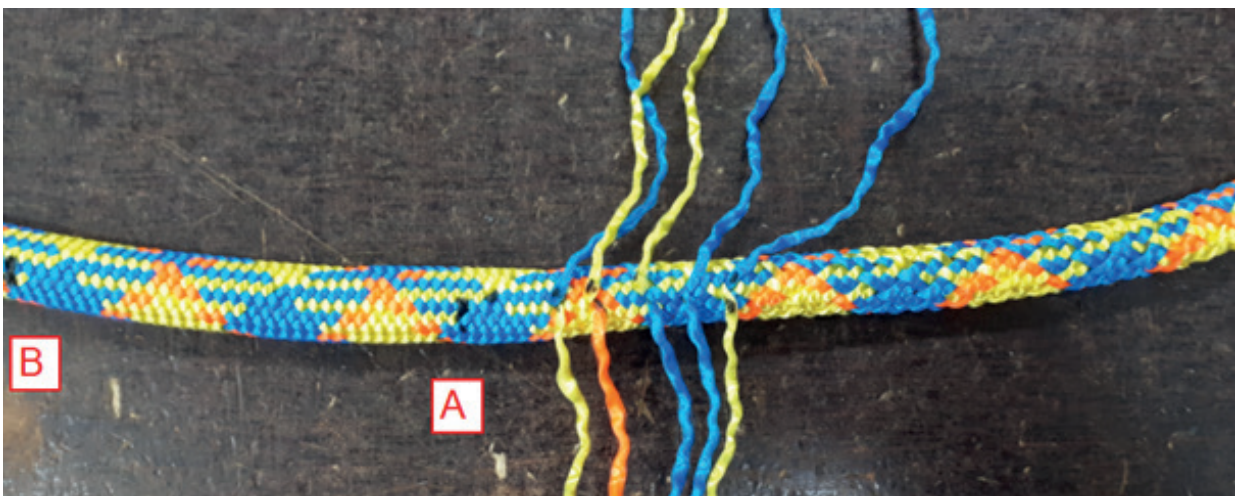
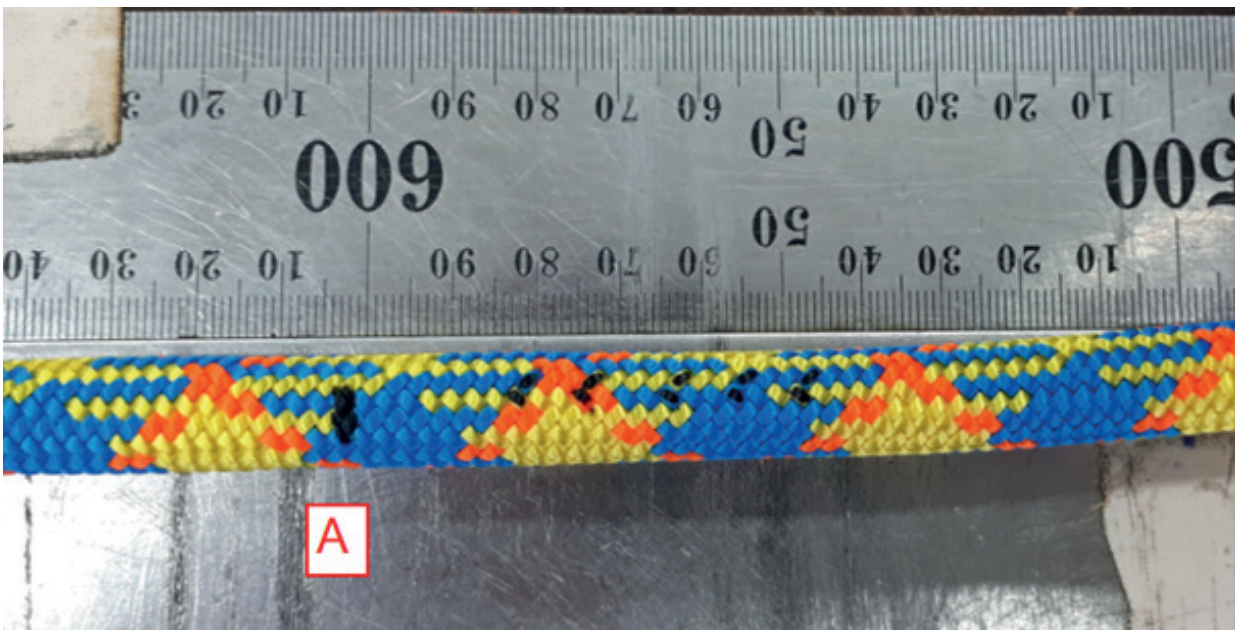
4. Pick out 5 core at mark C. 4 cores are staying within the cover!





5. Taper the cover

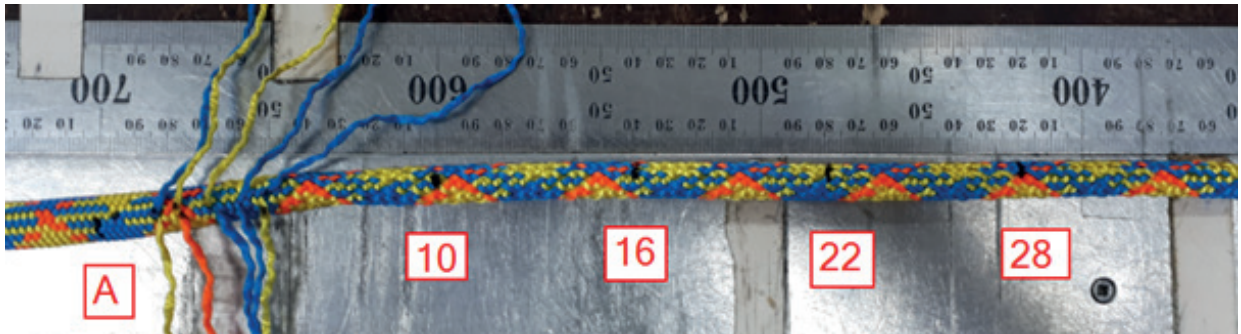
From A into direction rope end 10 cover yarns (5 left, 5 right). For that measure from A 2 cm into direction rope end. Mark that pair of cover yarns, then the third pair after that one, the fourth, the third and again the third pair of cover yarns. Pull out all of the marked cover yarns.





6. Mark the cover

From mark A into the direction rope end after 10 cm, 16 cm, 22 cm and 28 cm



Pull out at every mark one of the cores, but don't cut them. Start with the core at the 10 cm mark.

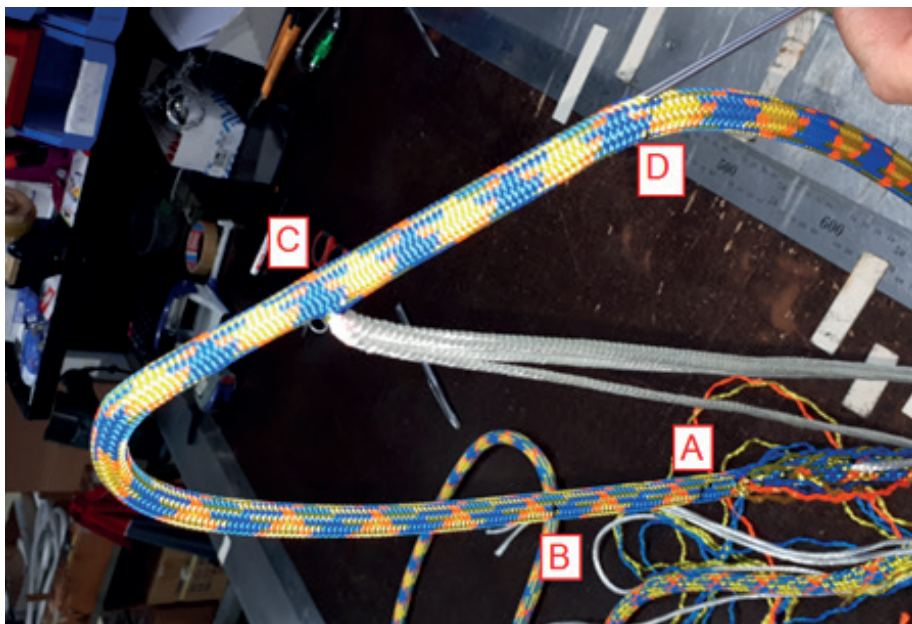
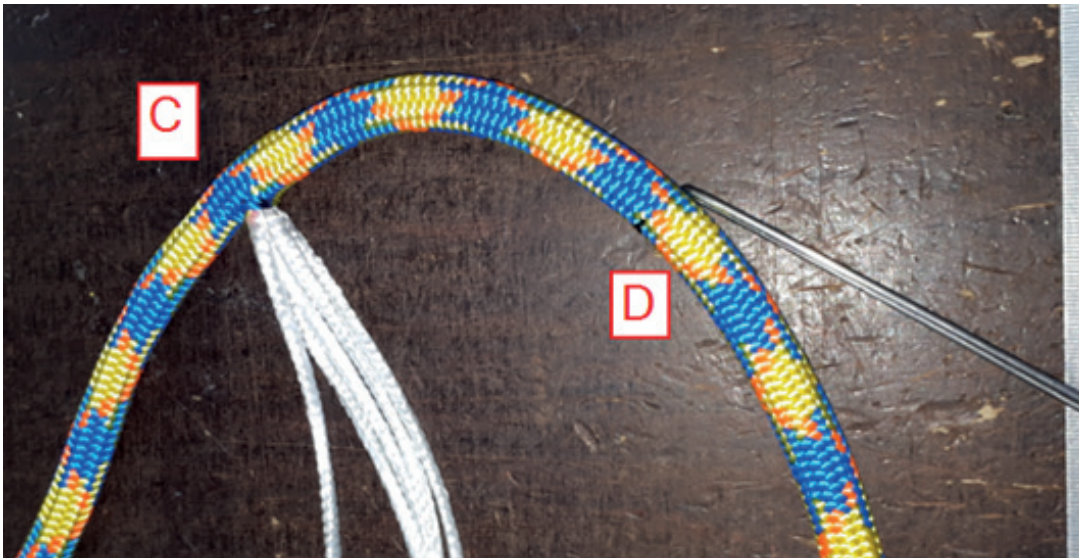


Milk the cover beginning at mark C. All core should lie side by side within the cover. It's the best to milk the rope between your thumb and index finger, then you notice when the cores overlap.

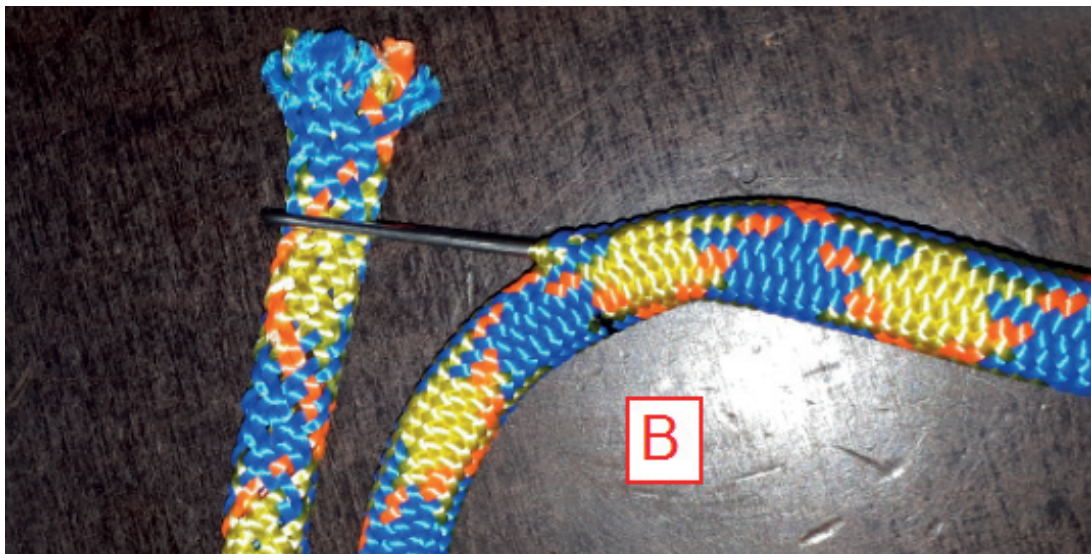
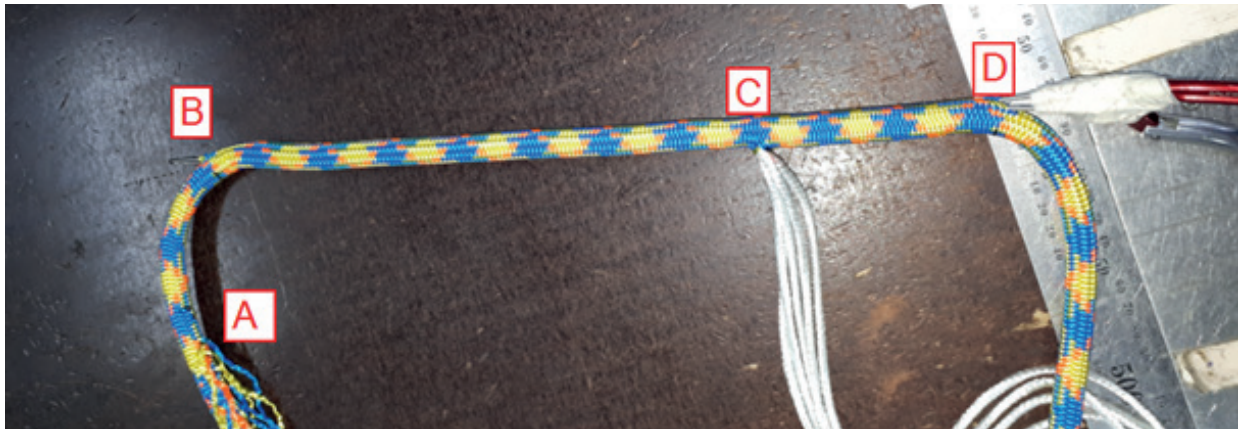


7. Push the wire sling through the rope

From D to B and pull the end of the hollow cover in, but just for 3-4 cm.



Important: don't push the wire sling through between the cores, always at the „ridge”, to avoid that you have to pull the cover through some loops of the cores. It's easier when you push the wire sling through from bottom to top and the rope end is hanging down loose.





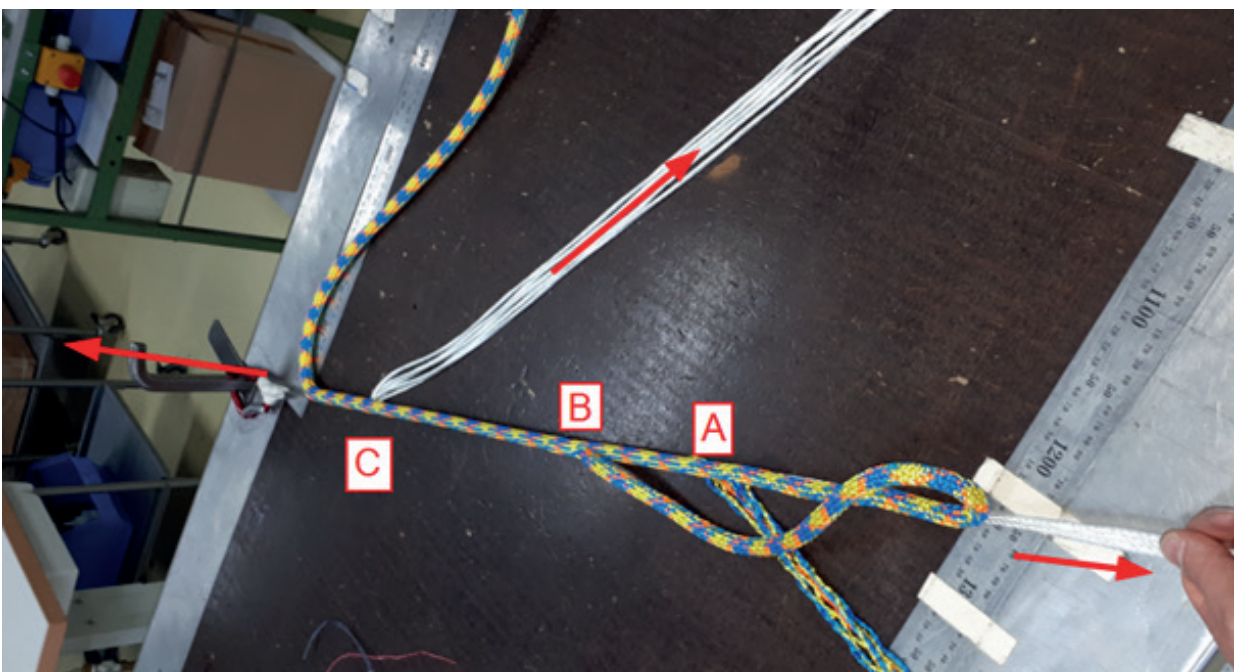
8. Fix the tied sling of the rope at a hook at the table.

And pull at the 4 cores, which are coming out ahead of mark A, by that you tension them equally without creating loops within the cover. Hold these 4 cores.



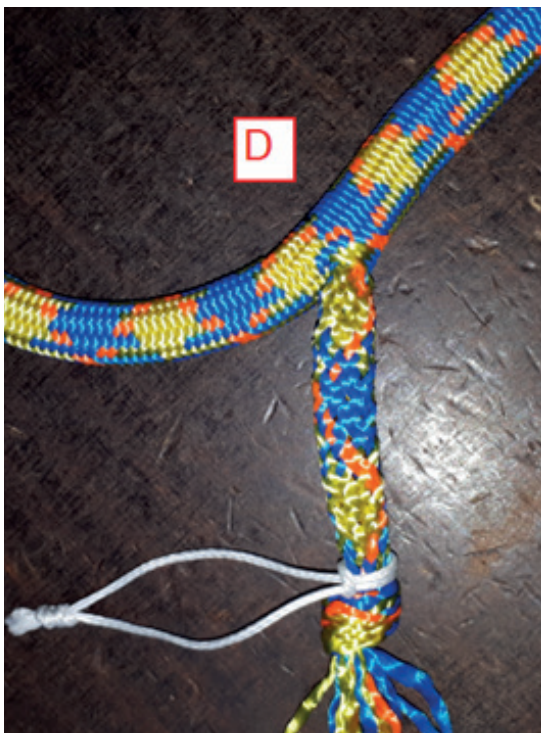
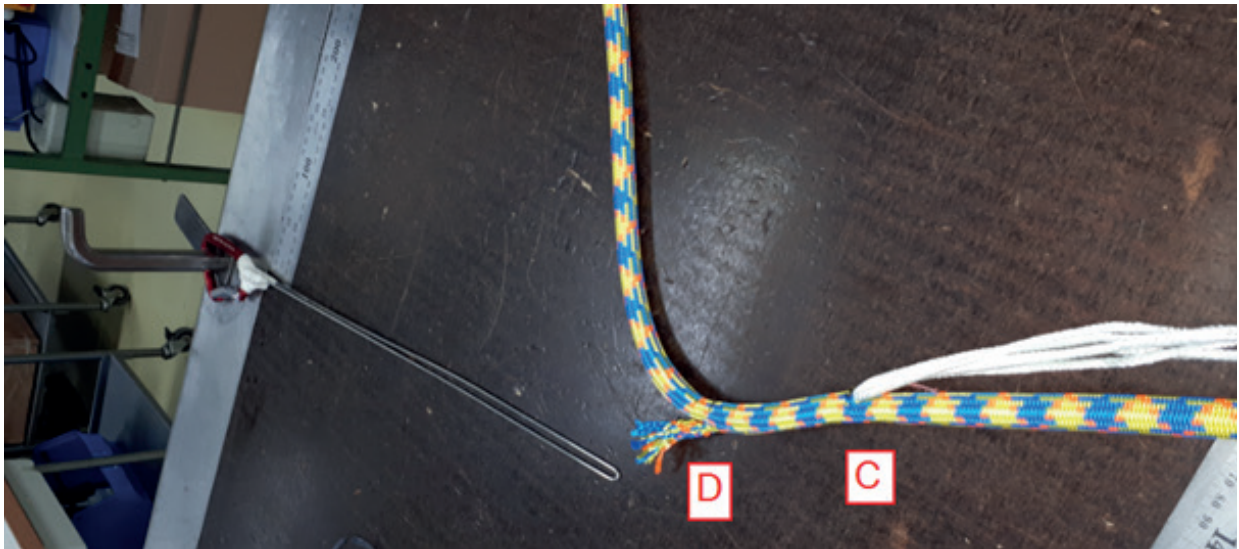
9. Now fix the carabiner from the wire sling at the hook.

Hold the 4 cores ahead of mark A and the 5 cores from mark C and pull slowly.





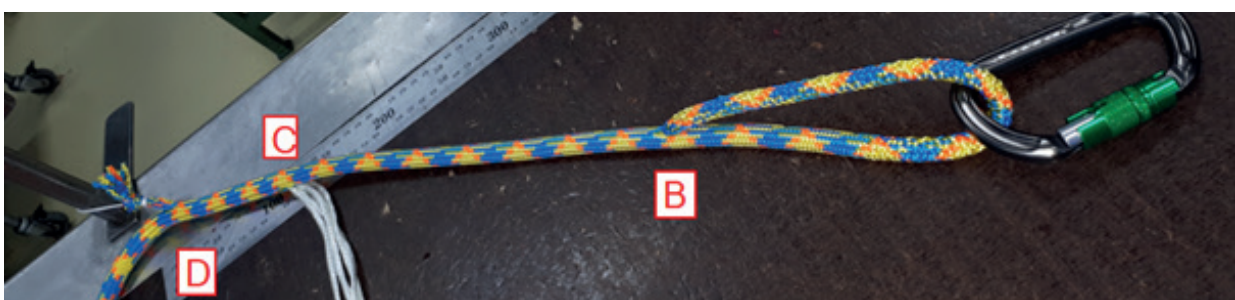
As soon as the spliced back cover is coming out at mark D stop and tie a knot at the end of the cover. Tie in a little sling too and pull back the cover until the end, that you have enough space for milking out the cores in the eye.





10. Milk the cover over the 4 cores

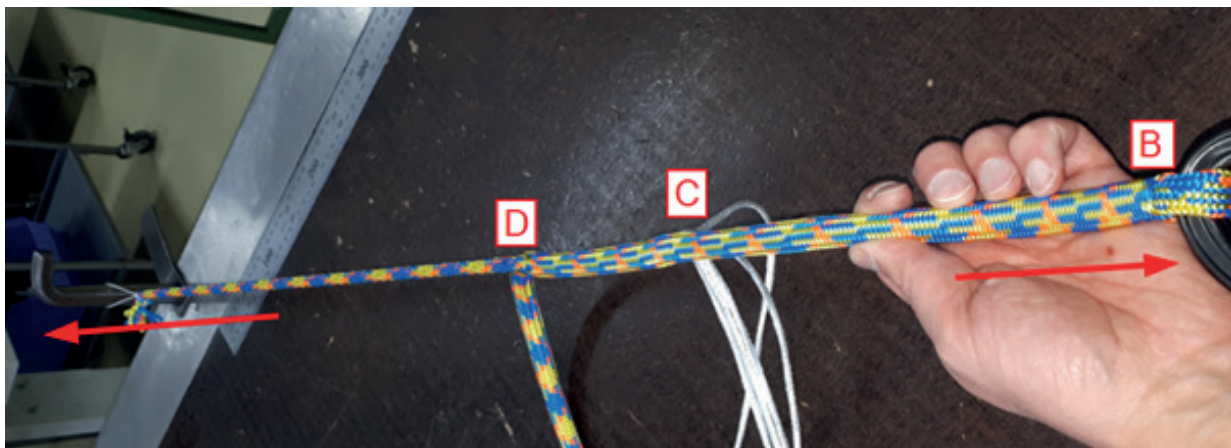
Cut off the loose ends of the cover yarns and cut off the 4 cores at the markings and milk them back.





11. Fix a DMM Boa carabiner at the eye.

The pull at the cover which comes out at mark D (with the sling fixed at the hook at the table). Pull at the carabiner and milk back the slack from C towards the eye.



12. Then milk back the slack from the eye into direction of mark C

Turn the rope around and milk into the other direction too.



Repeat 2 x

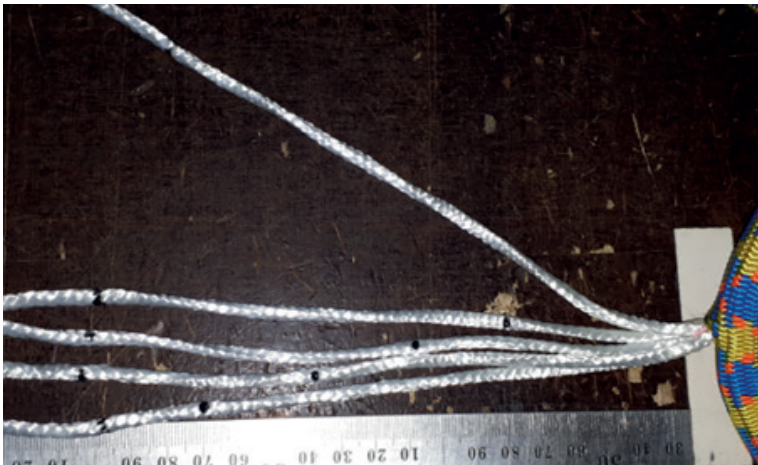


13. Mark the end of core and cover at mark C respectively D.



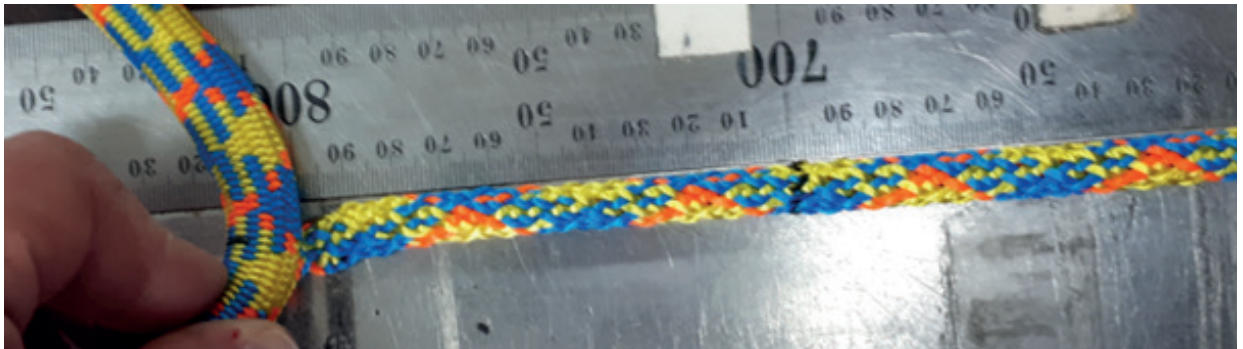
14. Pull out the end of the cores

Mark them at 3/6/9/12 cm and cut them at the marking. One of the cores remains uncutted.





Pull out the cover 10 cm, cut it off diagonally, open the braid and taper it.



15. Milk from the eye to D and back, repeat 2 x





16. Cut off the remaining core and milk it back too.



17. Make a whipping 5 cm behind the eye, 1 cm wide and stitch through 5 times



How to do a whipping on a spLIFE

Tools



Material: Dyneema Whipping Twine white 1 mm

1. Make 2 markings for the beginning and the end of the wraps

One at 5 cm and the other at 6 cm behind the eye.





2. Take approximately 1 m whipping twine and feed it into the needle.

Stitch through diagonally in the middle between both markings towards the 5 cm marking.



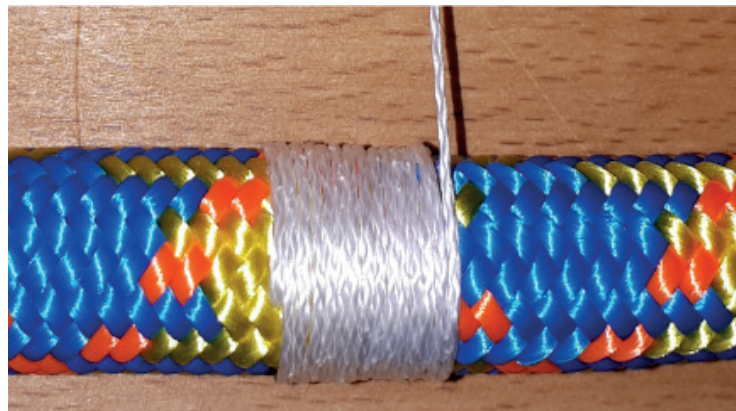
3. Pull the whipping twine through the rope until the end, melt it with a lighter and press it flat..





4. Wrap the twine tight around the rope between both markings

Don't cross the whipping twine during wrapping.



5. Stitch with the needle through the rope center

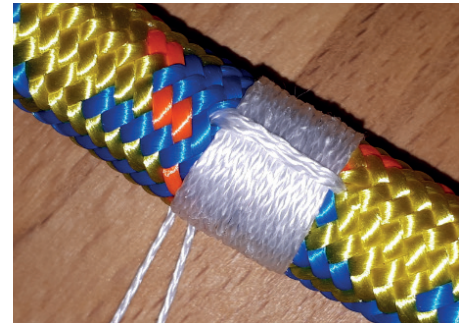
Pull the whipping twine completely through until the end of the whipping twine. Melt the end of the whipping twine with a lighter and press it flat.





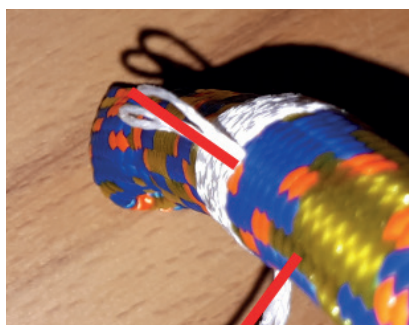
6. Stitch through the rope at the opposite side of the wraps

Pull the whipping twine tight. Take care that you don't cross the two whipping twines, they need to stay parallel.



7. Now stitch through the rope just a quarter of the circumference

You create a bridge over the wraps which is offset by 90° to the last bridge.





8. Stitch through the rope again two times

You create in total 4 bridges over the wraps, which are equally distributed. Cut off the remaining whipping twine, melt it and press it flat.

