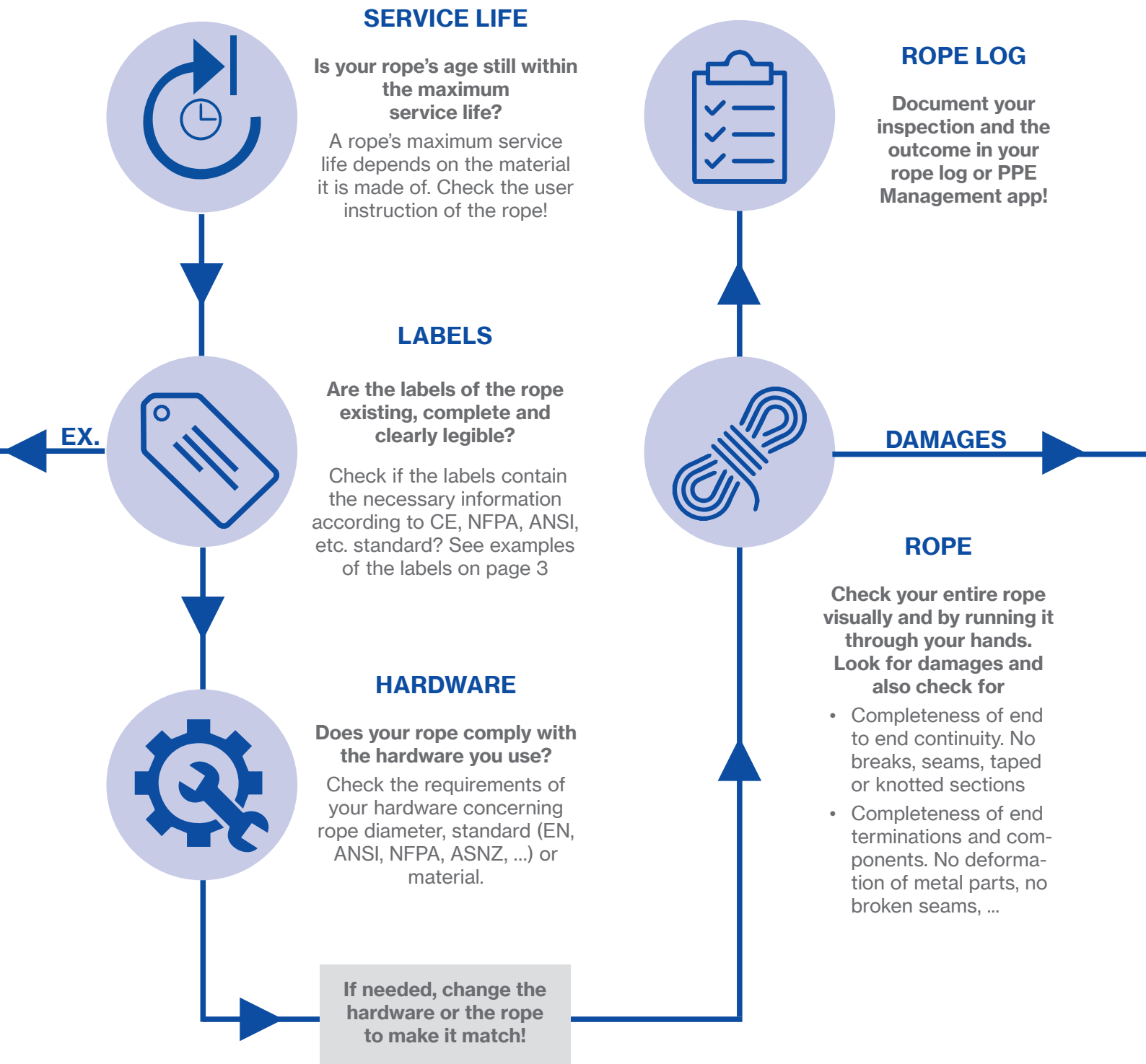


ROPE INSPECTION

Process & Guidelines



ROPE INSPECTION

Process & Guidelines

WHAT to inspect?

- ✓ Specs & Certifications
- ✓ General conditions
- ✓ Fabricated terminations

WHEN to inspect?

- ✓ Before and after every use
- ✓ Twice a year for ropes stored in rescue packs etc

WHERE to document it?

- ✓ Rope log
- ✓ PPE Management app (e.g. papertrail)

DAMAGES



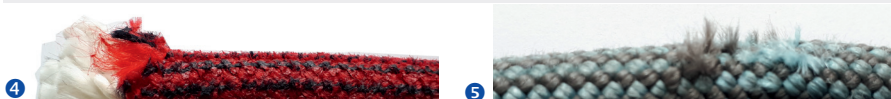
The rope is good to use!

- 1 Correct labelling
- 2 Proper or only slightly fuzzy cover
Length according to label
Middle mark available (if it had one)
- 3 Proper end termination



If these irregularities occur, you can set maintenance actions to keep the rope in use.

- 4 Core-Cover-Slippage
Cut the affected end of the rope and seal again with heat. If your rope has a middle marking, cut the same length on both sides
 - 5 Small local damage or abrasion of the cover
Cut off frays and check the rope after each use for worsening of the damage
- Different length than labelled**
Label the rope with the correct length



Throw the rope away!*

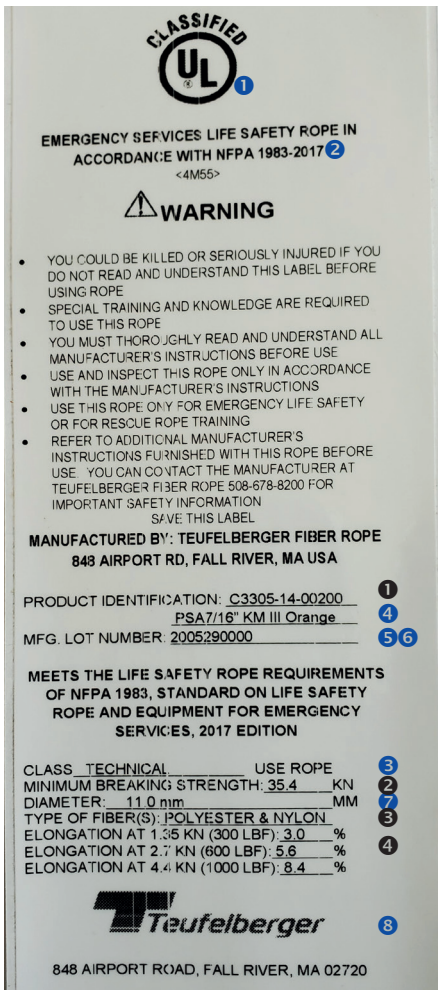
- 1 Fuzzing or abrasion
- 2 Cracks or core-shots
- 3 Cuts or taped parts
- 4 Deformation (flattening, ribbing, curving, squashing)
- 5 Glazing, hardening, melting
Stiffness or softness
Other signs of damage, heat or chemicals



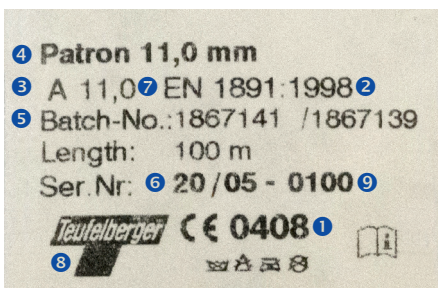
*Cut the rope into max. 1 meter sections so that it can't be used again for climbing by accident.

ROPE INSPECTION

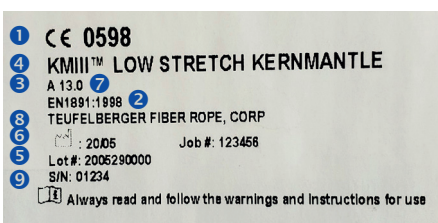
Label Examples & Checklist



NFWA-Label (USA)



EN Label (Europe)



EN Label (USA)

- ① Notified body
- ② Standard/Certification
- ③ Type/Class of certification
- ④ Name of the product
- ⑤ Manufacturing Lot Number
- ⑥ Date of Manufacture (YY/MM)
- ⑦ Diameter
- ⑧ Manufacturer
- ⑨ Serial number

NFWA only

- ① Product identification number
- ② Minimum breaking strength
- ③ Types of Fibers used
- ④ Elongation

← LABEL EXAMPLES

CHECKLIST