



T-ROLL

Turntable dispenser for Jumbo coils of Polyester (PET) and Polypropylene (PP) strap

- ✓ Plug & Play interface with new / existing strapping machine
- ✓ No manual handling of strap coils (less risk of injury)
- ✓ Optimize OEE (3 times less downtime due to strap coil changes)

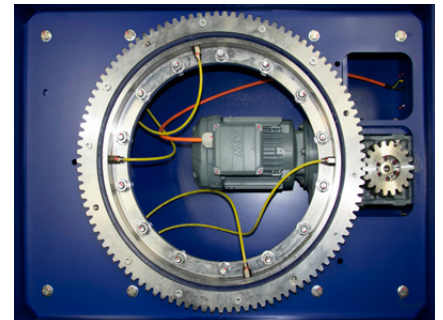
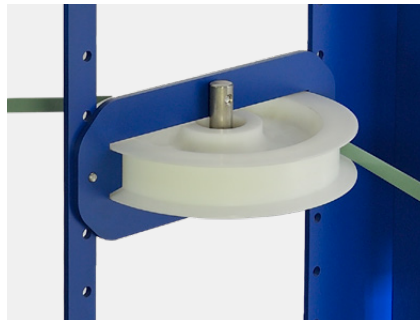
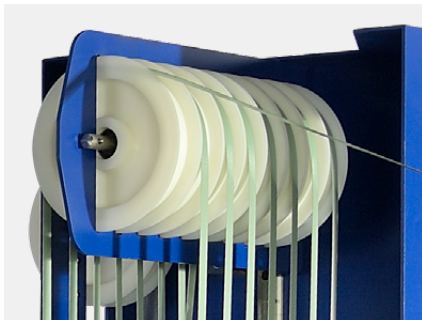
T-ROLL

The T-Roll Jumbo Strap Dispenser is designed for use with 'eye to the sky' Jumbo, Super-Jumbo, Mega-Jumbo & Ultra-Jumbo coils. Once a coil has been exhausted, the operator removes the cardboard core, prepares the next coil and restarts the strapping machine.

Technical specifications

Dimensions	Pulley Unit 1	Pulley Unit 2
Dimensions Pulley Unit	H: 2.010 mm W: 660 mm D: 740 mm	H: 1.930 mm W: 350 mm D: 470 mm
Dimensions Turntable Unit	Ø 1.690 mm Thickness: 6 mm Height from floor: 425 mm	
Maximum Load	1.200 kg	
Pallet Sizes	All sizes up to 1.160 x 1.160 mm	

Coils / pallet	Up to 7 (depending on strap size)
Strap Width	8 - 32 mm
Table rotation speed	5 - 15 rpm
Power Supply	115-240V/ 50-60Hz/ 2P or 400V/ 50Hz/3P optional.
Power Consumption	1.1 kW
Control System	SEW Inverter (IP66 rating)
Operation mode	Automatic / manual
Installation	Up to 10 m from strapping machine



better.safe FEATURES

- ✓ Lower shipping cost (more metres per truck/container)
- ✓ Reduced carbon footprint (less journeys)
- ✓ Optimize warehouse space (more metres per pallet)
- ✓ Plug & Play interface with new/existing strapping machine
- ✓ Robust, 6 mm turntable accepts pallets of up to 1.200 kg
- ✓ Minimal wearing parts (ring gear drive instead of belt/chain)
- ✓ No manual handling of strap coils (less risk of injury)
- ✓ Optimize OEE (3 times less downtime due to strap coil changes)*
- ✓ Clockwise/Anticlockwise operation (no risk of wrongly loaded coils)
- ✓ Smooth strap delivery by precise rotation of accumulator
- ✓ Pulley system holds strap in place, providing straight straps and easy feeding

T-Roll is supplied without safety guarding. Please check your local safety regulations.

*depending on the strap specification